



GRIFFIN
THE PROPERTY PEOPLE



Parsonage Road , Grays, RM20 4AW

£125,000

**** GROUND FLOOR **** STUDIO FLAT **** NO ONWARD CHAIN ****
156 YEARS LEASE ****

We are delighted to offer for sale this ground floor studio flat which is ideally situated for access to INTU Lakeside, Chafford Hundred train station which is on the Southend to London Fenchurch Street C2C line and is great for the A13 and M25.

The property itself benefits from a good sized lounge/bedroom area, EXTENDED LEASE, communal gardens and parking as well as being offered with NO ONWARD chain.

Call the sales team today to arrange your viewing before you miss out.....

Viewing

Please contact our Grays Sales Office on 01375 397872 if you wish to arrange a viewing appointment for this property or require further information.

- Ground Floor
- Lounge/Bedroom Area
- Long Lease
- Parking
- Established Development
- Extended Lease
- Viewing Advised
- EPC: D65



0



1



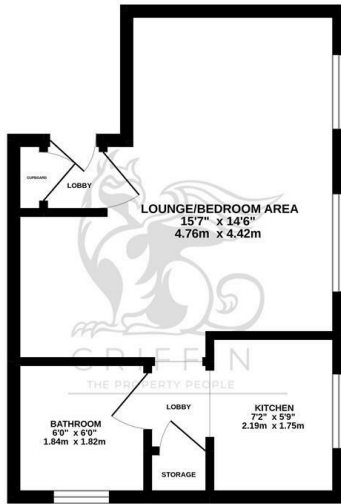
1



D

Floor Plan

GROUND FLOOR
285 sq.ft. (26.5 sq.m.) approx.

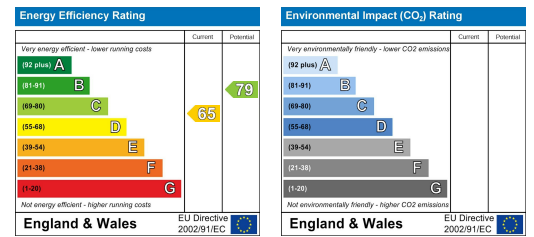


TOTAL FLOOR AREA: 285 sq ft (26.5 sq m) approx.
While every attempt has been made to ensure the accuracy of the floorplan contained here, measurements of doors, windows, stairs and any other items are approximate and no responsibility is taken for any error, omission or misstatement. This plan is for illustrative purposes only and should be used in such by any prospective purchaser. The services, systems and appliances shown are for general information only and do not constitute a contract. Made with SketchUp 2022.

Area Map



Energy Efficiency Graph



These particulars, whilst believed to be accurate are set out as a general outline only for guidance and do not constitute any part of an offer or contract. Intending purchasers should not rely on them as statements of representation of fact, but must satisfy themselves by inspection or otherwise as to their accuracy. No person in this firm's employment has the authority to make or give any representation or warranty in respect of the property.